



2Gen

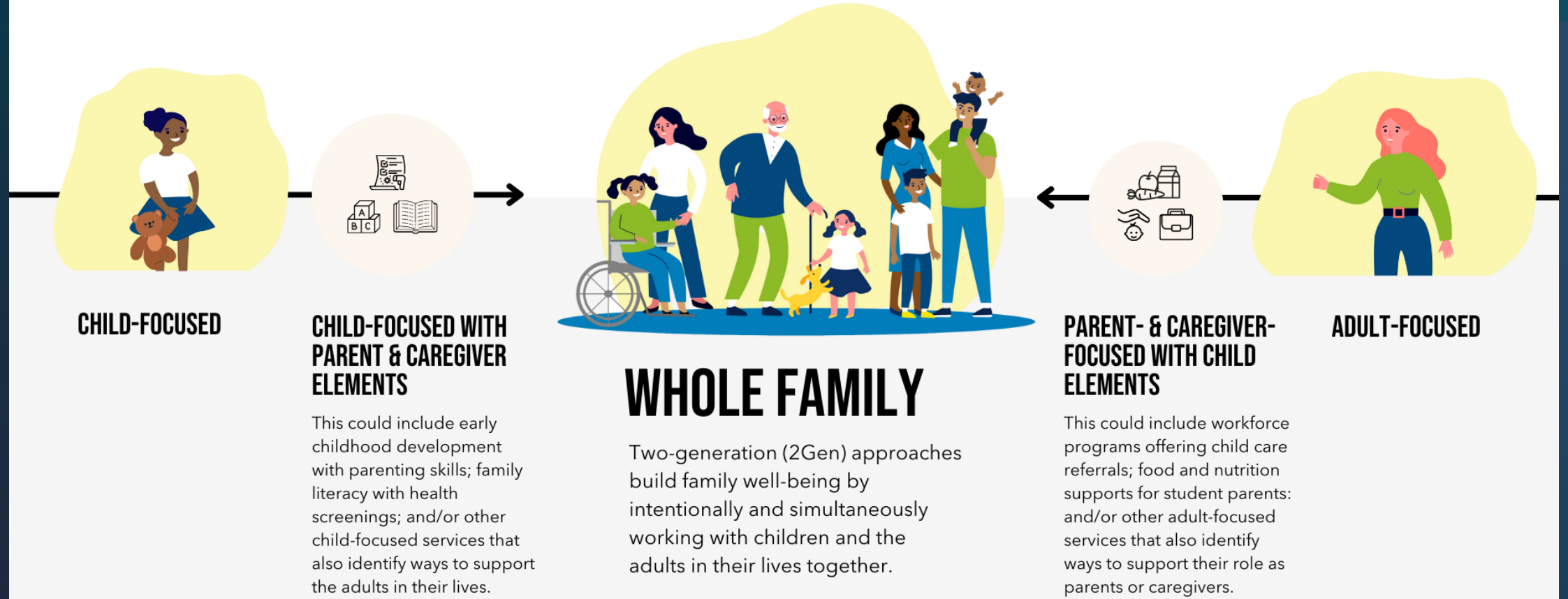
Supporting Student Parents/Caregivers

Stephanie Glynn
Director, Student Success
Wisconsin Technical College System

We were built for this moment

“Two-generation (2Gen) approaches build family well-being by intentionally and simultaneously working with children and the adults in their lives. 2Gen approaches center the whole family to create a legacy of educational success and economic prosperity that passes from one generation to the next.”
– Ascend at the Aspen Institute

TWO-GENERATION (#2GEN) APPROACHES CENTER WHOLE FAMILIES



THE SIX KEY COMPONENTS OF TWO-GENERATION APPROACHES

Two-generation approaches (2Gen) build family well-being by intentionally and simultaneously working with children and the adults in their lives together.

EARLY CHILDHOOD EDUCATION

- Head Start
- Early Head Start
- child care partnerships
- preK
- home visiting
- Family, Friend, and Neighbor Care (FFN)

K-12

- kindergarten ready
- 3rd grade reading skills
- parent engagement
- graduation and postsecondary prep

POSTSECONDARY & EMPLOYMENT PATHWAYS

- community college
- training and credentials
- workforce partnerships
- employer partnerships

SOCIAL CAPITAL

- peer and family networks
- coaching
- cohort strategies

HEALTH, INCLUDING MENTAL HEALTH

- mental, physical, and behavioral health
- coverage and access to care
- adverse childhood experiences and toxic stress

ECONOMIC ASSETS

- asset building
- housing and public supports
- financial capacity
- transportation

#2GEN





WTCS x 2GEN

National Data

2019-2020 Academic Year



- 45% of Veteran Undergraduates are Parents, 286,000
- Dependent Children
 - 44% = 1 child
 - 56% = 2 or more children
 - 44% have at least one child under the age of 6

National Data 2019-2020 Academic Year



Veteran Undergraduate Student Parents

- Age
 - 5% <25
 - 17% 25-29
 - 46% 30-39
 - 32% ≥40
- 65% Married
- 48% First-gen

Veteran Undergraduate Students

- Age
 - 20% <25
 - 29% 25-29
 - 29% 30-39
 - 21% ≥40
- 27% Married
- 36% First-Gen

National Data 2019-2020 Academic Year



Veteran Undergraduate Student Parents

- Institution Type
 - 45% Community or technical college
 - 20% Public baccalaureate
 - 21% Private for-profit
 - 14% Private non-profit
- Enrollment
 - 65% Full-time
 - 35% Part-time

Veteran Undergraduate Students

- Institution Type
 - 49% Community or technical college
 - 26% Public baccalaureate
 - 11% Private for-profit
 - 14% Private non-profit
- Enrollment
 - 72% Full-time
 - 28% Part-time

National Data

2019-2020 Academic Year



Veteran Undergraduate Student Parents

- Economic
 - 20% could not come up with \$500 next month
 - 6% were recently homeless
 - 24% are food insecure
 - 17% participate in SNAP
- Employment
 - 58% Full-time
 - 10% Part-time
 - 32% Not working

Veteran Undergraduate Students

- Economic
 - 15% could not come up with \$500 next month
 - 9% were recently homeless
 - 21% are food insecure
 - 5% participate in SNAP
- Employment
 - 47% Full-time
 - 22% Part-time
 - 31% Not working



Support for Student Parents/Caregivers Across the WTCS



- Collect Single-Parent Data as a part of Federal Perkins CTE funding
- Colleges accessed CCAMPIS funding
- A handful of colleges with childcare on campus
- Hearing students speak about their experiences accessing education as a parent

Promising Practices



- Fox Valley Technical College
 - Starting Point 2.0 Program
 - Collaboration with YMCA/YWCA
- Milwaukee Area Technical College
 - Childcare
 - Drop-in Care
 - Automotive Program: Car Detailing for Parenting Students
- Blackhawk Technical College
 - Family Friendly Study Room

Promising Practices



- Southwest Wisconsin Technical College
 - Community scholarship for parenting students, ladder disbursement
- Madison College
 - FamilyU Cohort
 - Institutionalized Student Parent Support



Western Technical College

Bobby Lith

Student Parent Resource Navigator

Needs and Assets Assessment:

Consider prenatal-age 5 timeframe

Parents and Caregivers:

1. As a parent, what do you love most about your community, what supports have been most beneficial while raising your children? *adjusted for future parent*
2. What challenges have you faced while raising young children? *adjusted for future parent*
3. What knowledge or resources do you wish you would have had, or had access to earlier while raising young children? *adjusted for future parent*



Stakeholders:

1. What community resources and supports do you see as most beneficial to families with young children?
2. Within your role, what do you see as the biggest challenges for families raising young children?
3. If you had all the power, influence, and money to improve early childhood outcomes, what would you target?



Data Collection Process:

By the Numbers

5 Months
of intensive data collection,
Oct 2025 - Feb 2026

627 **Total Voices Heard**
Across all community segments

454 **Parents and Caregivers**
Shared their lived experiences

173 **Community Stakeholders**
Contributed expert perspectives

- **29 total meetings** with **36 different groups** of stakeholders
- Attended **14 different playgroups** and family nights
- **Priority to hear from all families**, specifically marginalized groups who are often left out of these processes.

What did we learn?

Top Assets Identified:

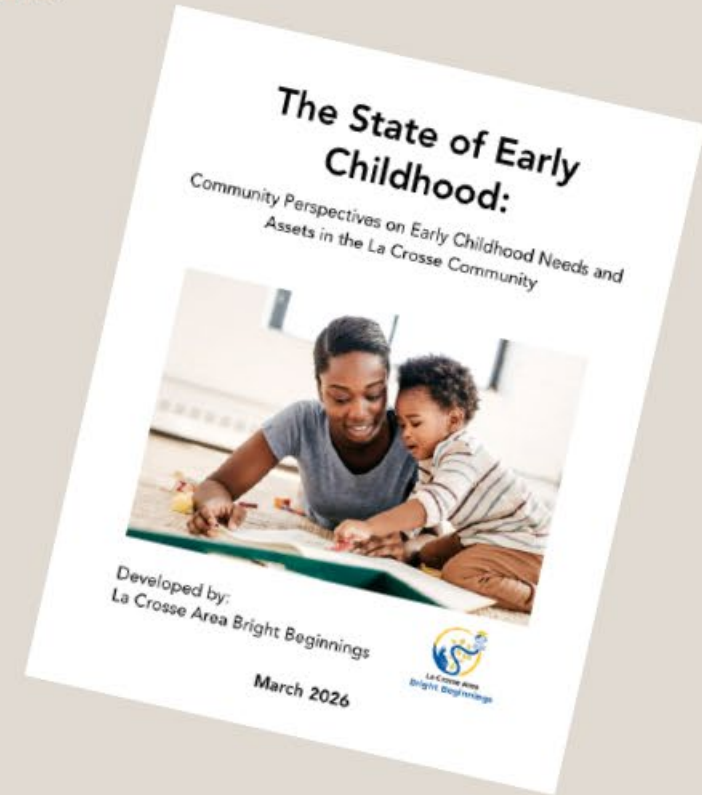
1. **Local Organizations and Programs**
2. Education and Early Intervention Support
3. Basic Needs and Financial Support

Top Needs Identified:

1. **Child Care**
2. Economic Stressors
3. Navigating Systemic Barriers and Mental Health Challenges

Community Asks:

1. **A Centralized Hub**
2. Universal Supports
3. Parent Education



JFF 2Gen Cohort



- Phase 1
 - Three convenings
 - Cross-functional stakeholders
 - Strategy Map
- Phase 2
 - Actionize Strategy Map
 - Childcare
 - Data
 - Capacity Building

Family Friendly College Toolkit

How the Toolkit Can Help

Increase campus dialogue about parenting and caregiving students

The Toolkit supports college teams to develop Task Forces that bring together staff, faculty, and students to surface campus needs and build shared ownership for change.

Map current campus resources and gaps

The tools help teams assess the current landscape—identifying what exists, what is missing, and where opportunity lies.

Learn from national recommended practices

Multiple real-world examples illustrate approaches pursued at community colleges and universities across the country, giving teams a concrete starting point for planning.

Gather data from and about parenting and caregiving students

The **focus group** and **survey** tools help college teams collect information directly from students. Guidance and resources that support **institutional data collection** help colleges understand the size and characteristics of this population and identify academic or retention challenges.

Build an evidence-based action plan

The Toolkit's self-assessment process produces a concrete, data-driven action plan, as well as dissemination strategies to share findings with college and community stakeholders.

Toolkit Community of Practice



- Monthly Systemwide Conversations
- Topics led by Colleges as they navigate the toolkit and learn more about their parenting student population

Data



- System office will be working on building the capacity to collect student parent data beyond single-parent required
- Leverage data to better support parents that are seeking a post-secondary credential

Q&A

stephanie.glynn@wtcsystem.edu